



# THE WORLD ISLANDS

## GUIDELINES TO OPERATORS AND MASTERS

### Introduction

'The World' Islands, consisting of about 300 islands protected by oval-shaped breakwater, is located about 4 km offshore Dubai's Jumeirah coast. There are 6 entrances marked by buoys and entry is controlled and monitored by Nakheel through World Security boats stationed at the entrances. All crafts and personnel are to abide by the strict safety and environmental policy of The World LLC.

This document provides the master and craft operators with general rules and guideline for safe and smooth operation and in compliance with the requirements of 'The World'.

Masters and operators are to familiarize themselves with this Guideline and ensure its compliance at all times.



## **Scope**

This Guideline applies to all craft visiting or serving the World Islands.

## **Responsibility**

The master is responsible in ensuring the safe operations of his vessel in accordance with the applicable maritime rules and the requirements of Nakheel' s 'The World' islands project, specifically outlined herewith.

## **Management of Visiting Crafts**

All crafts intending to enter 'The World' islands are required to obtain approval of Nakheel through the Waterways Division. Approved crafts are to communicate and coordinate all movements with World Security and report any deviation from the agreed plan as soon as possible. The following to be adhered to:

### **Craft Requirements**

- a) Valid Operating License
- b) Valid Insurance
- c) Qualified master and crew
- d) Minimum Manning Maintained
- e) Fitness for Duty

## **Point of Contact in case of emergency**

### **World Security**

050 922 7319

### **Nakheel Waterways**

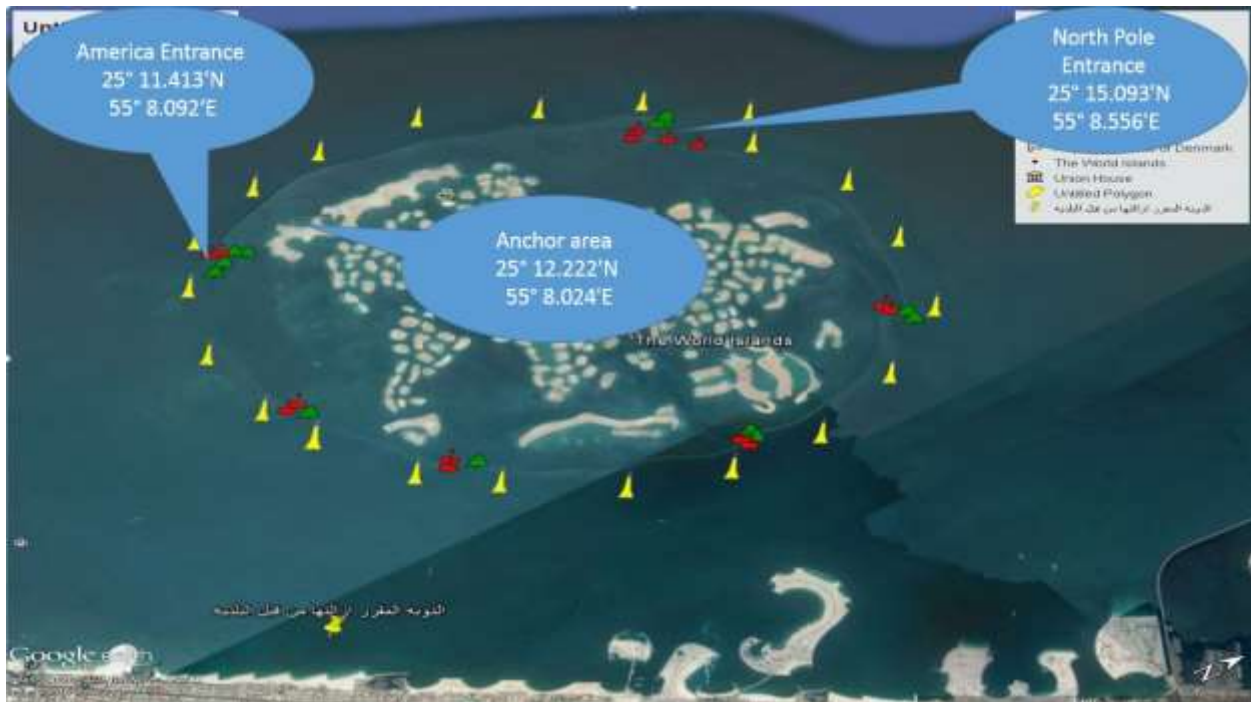
John Lonachan	050 880 7484
Issam Chamkhany	052 987 6661
Ali Al Shaiba	050 656 3133
Sana Hurzuk	055 900 6436

## Navigation & Routes

All vessels and craft should comply with the requirements as laid down in the International Regulations for Preventing Collision at Sea 1972, as amended.

The buoyage system used within the breakwaters of The World islands waters are in accordance with the International Association of Lighthouse Authorities (IALA), Buoyage System A. Upon entering the entrance channels the port hand buoy (red) should be passed on the vessel's port side.

All craft are to navigate within the routes established below:

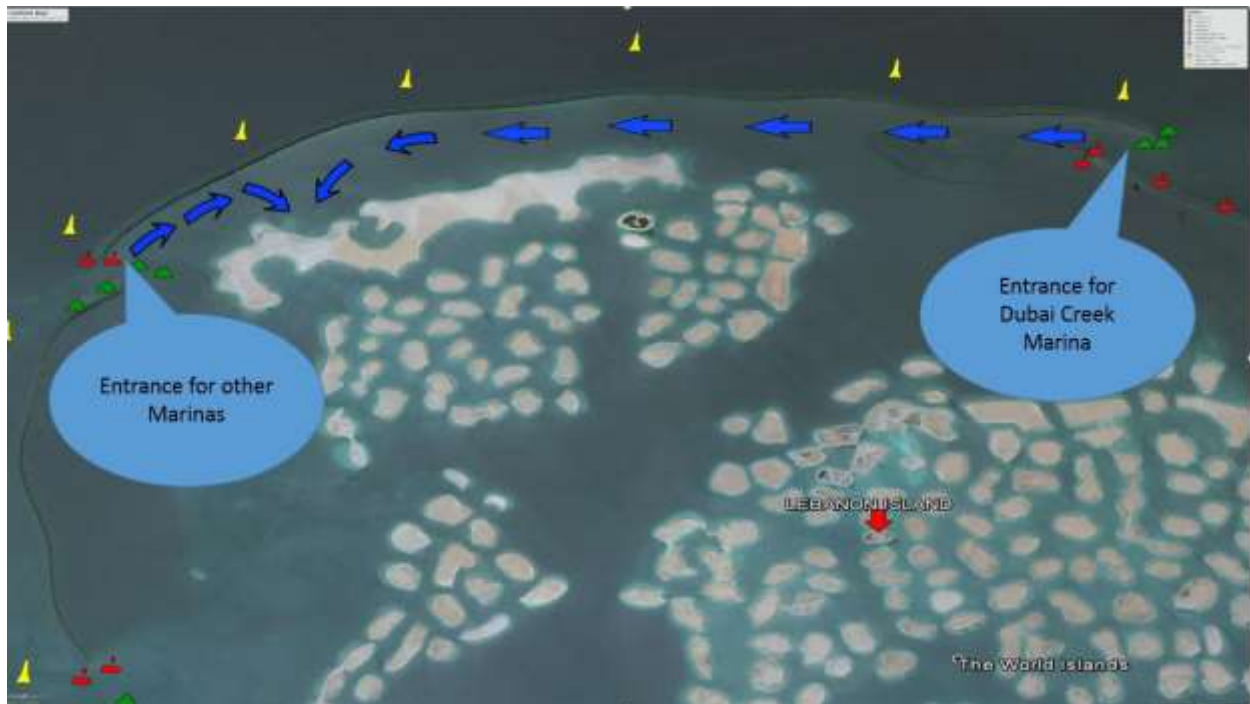


## Coordinates

America Entrance  
25° 11.413'N  
55° 08.092'E

North Pole Entrance  
25° 15.093'N  
55° 08.556'E

Anchorage Area  
25° 12.222'N  
55° 08.024'E



Special Note: The data and information provided by Nakheel for The World Islands may differ from actual or prevailing and Nakheel holds no responsibility for any consequences arising from such discrepancies. Master and operators must exercise caution at all times when navigating and operating within The World Islands.

### **Berthing & Anchoring**

Craft awaiting passengers shall remain at anchor after disembarkation. No water activities are allowed for anyone while at the anchorage area.

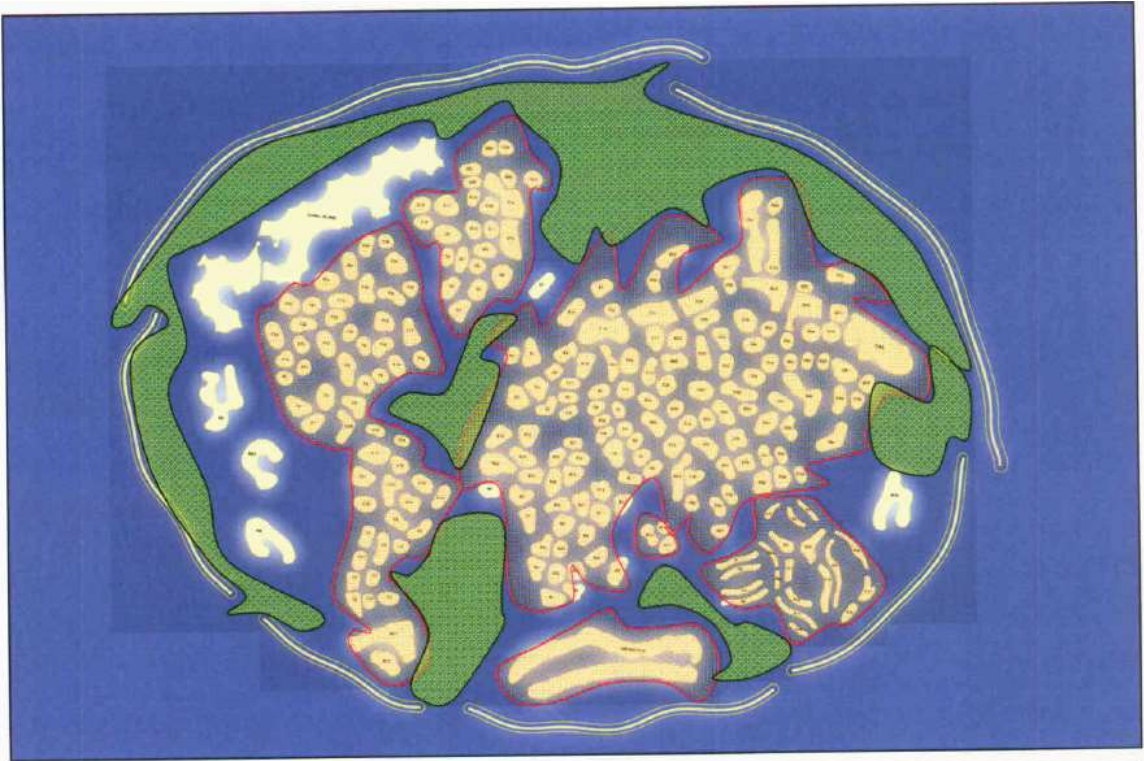
### **Speed Limit**



The waters of The World islands are sensitive to wash from passing craft. The speed limit within the breakwater is established to protect the islands, piers, jetty and moored craft against erosion and damage. All masters shall ensure that the speed limit is being maintained at all times.

**Green**  
Zone  
=  
Max.  
10  
knots


**Blue**  
Zone  
= Max.  
8  
knots

**Red**  
Zone  
= Max.  
5  
knots



  **THE WORLD**  
DUBAI, UNITED ARAB EMIRATES  
15 12 2007

**Master Plan**  
Version 3.1 (12 December 2007)

  
0 500 1000 m  
Graphic Scale



## Passenger Safety

It is the responsibility of the master and his crew to ensure the safety of the passengers at all times. All passengers shall be briefed about the safety and emergency procedures onboard the craft and while embarking and disembarking.

### Dos & Don'ts

---

#### Swimming

Swimming is allowed only within the anchorage area for the event at The World Islands.



---

#### No Diving

No diving is permitted anywhere within the breakwater or from onboard a craft



---

#### Fishing

No fishing of any description is permitted at any time



---

#### Waste Disposal

No waste of any description is to be discharged into the water. Waste includes hazardous materials, oils, fuels, sewage etc.

---

#### Bilge Water Disposal

No oily engine room bilge water is to be discharged into the water.

---

#### Sewage Disposal

No sewage, raw or treated, shall be discharged into the water.

---

#### Passing Speed

When passing any craft or vessel made fast to berth, pier or jetty the master of any craft shall reduce speed to reduce the effects of interaction and wash on the vessel.

---

#### Waterskiing, Jet skiing, Power Boating

No persons shall at any time engage in waterskiing, jet skiing, jet biking, power boating.



---

**Smoke**

The master shall ensure that at no times do the engines of their craft produce excessive smoke

---

---

**Island Tour**

No craft is allowed to tour other islands at any time.

---

---

**Island Hopping**

Hopping between the islands is not allowed at any time.

---

**Penalties**

Any craft found violating the rules of The World islands will be penalized and may include the revoke of approval.

Kindly fill in the below details and submit the signed copy along with valid registration card and insurance copy for the vessel.

1. Name of Vessel Owner/Captain:
2. Name of the Vessel:
3. DP No:
4. Size of vessel:

I, \_\_\_\_\_ hereby acknowledge that I have read and accepted the terms and conditions of the Guidelines to Operators for World Island.

Signature \_\_\_\_\_

Date \_\_\_\_\_

**End**

**Version: 003  
06/10/2016**